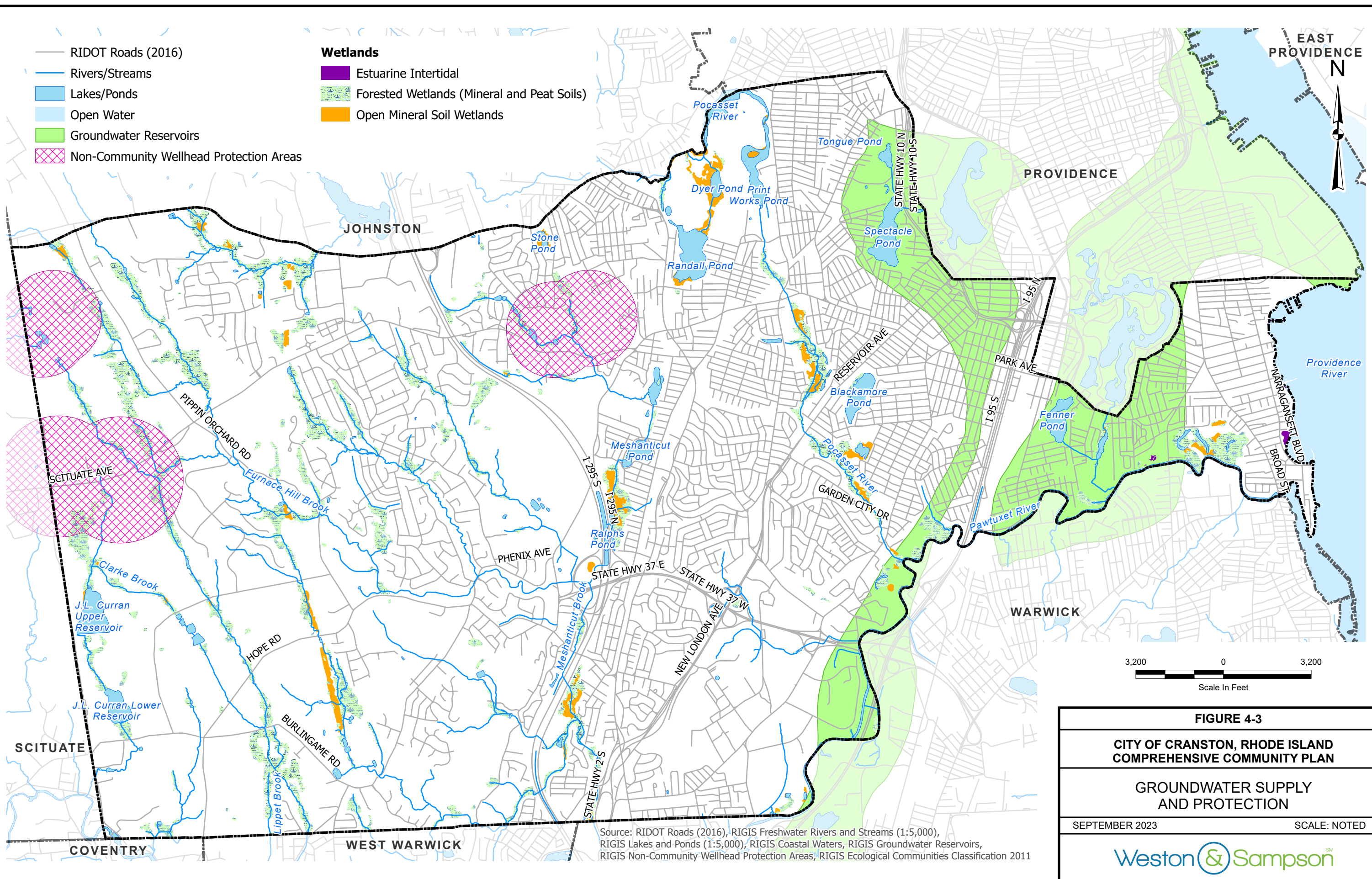


- RIDOT Roads (2016)
- Rivers/Streams
- Lakes/Ponds
- Open Water
- Groundwater Reservoirs
- Non-Community Wellhead Protection Areas

- Wetlands**
- Estuarine Intertidal
  - Forested Wetlands (Mineral and Peat Soils)
  - Open Mineral Soil Wetlands



Source: RIDOT Roads (2016), RIGIS Freshwater Rivers and Streams (1:5,000), RIGIS Lakes and Ponds (1:5,000), RIGIS Coastal Waters, RIGIS Groundwater Reservoirs, RIGIS Non-Community Wellhead Protection Areas, RIGIS Ecological Communities Classification 2011

**FIGURE 4-3**  
**CITY OF CRANSTON, RHODE ISLAND**  
**COMPREHENSIVE COMMUNITY PLAN**  
**GROUNDWATER SUPPLY**  
**AND PROTECTION**  
 SEPTEMBER 2023 SCALE: NOTED  
 Weston & Sampson<sup>SM</sup>